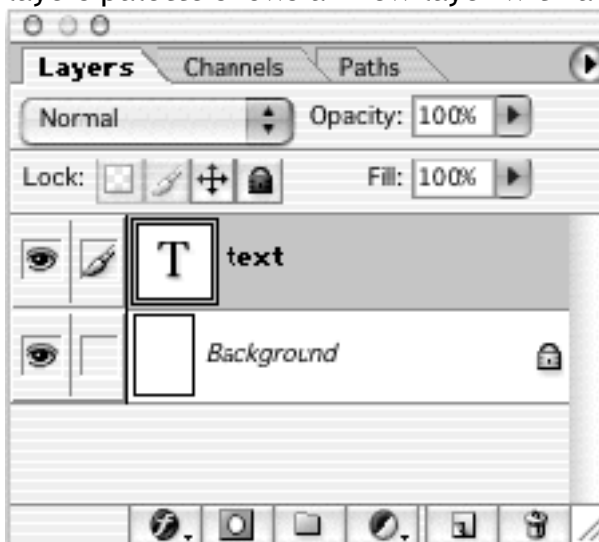


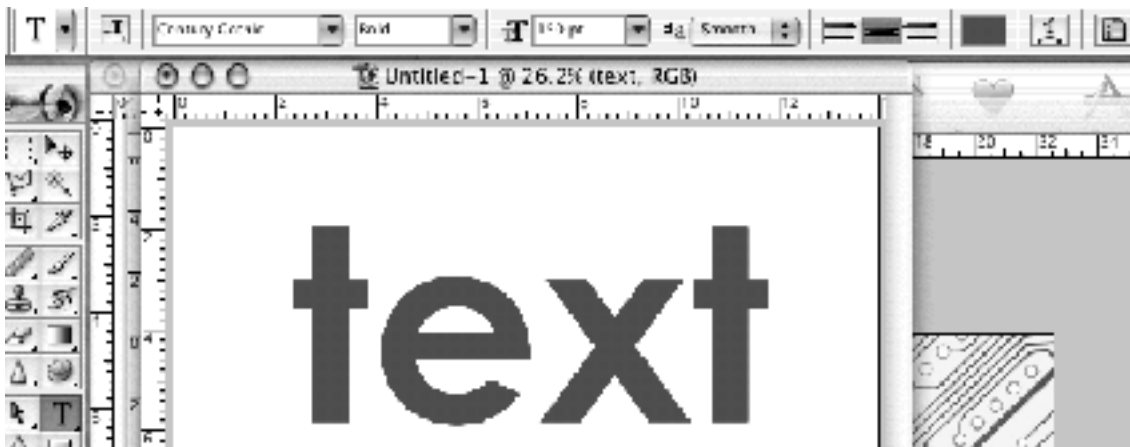
Text in Photoshop

Photoshop's text tool creates text, on a text layer, that uses the fonts in the system you are working on. Before printing, the file needs to be flattened and any text needs to be rasterised - that is - converted from font based text into pixels.

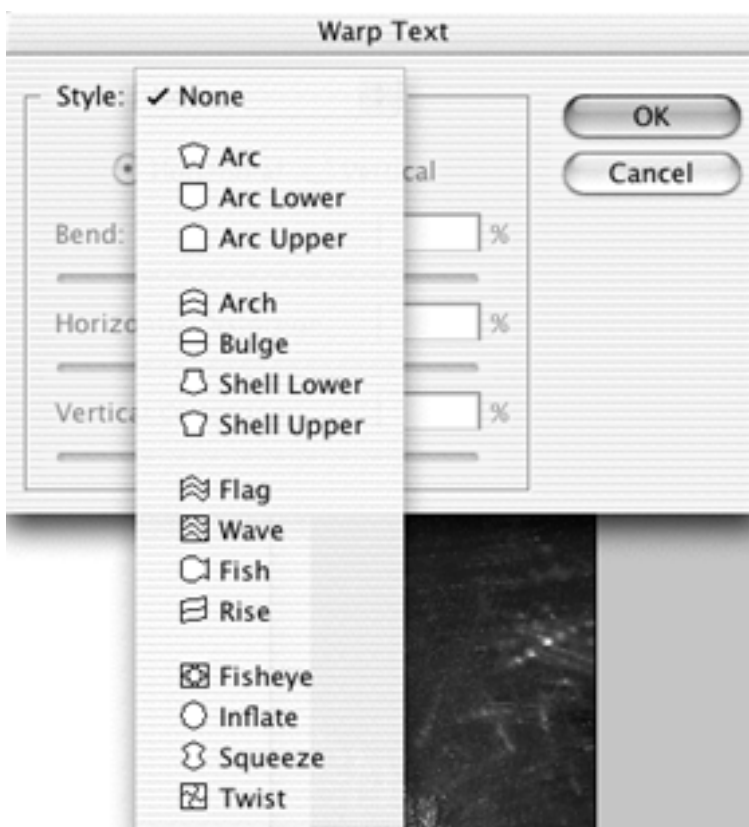
1. Make a new document; 14 x 20 cm at 300DPI
2. Choose the Text tool and click anywhere on the page and start typing. The layers palette shows an new layer with a 'T' icon.

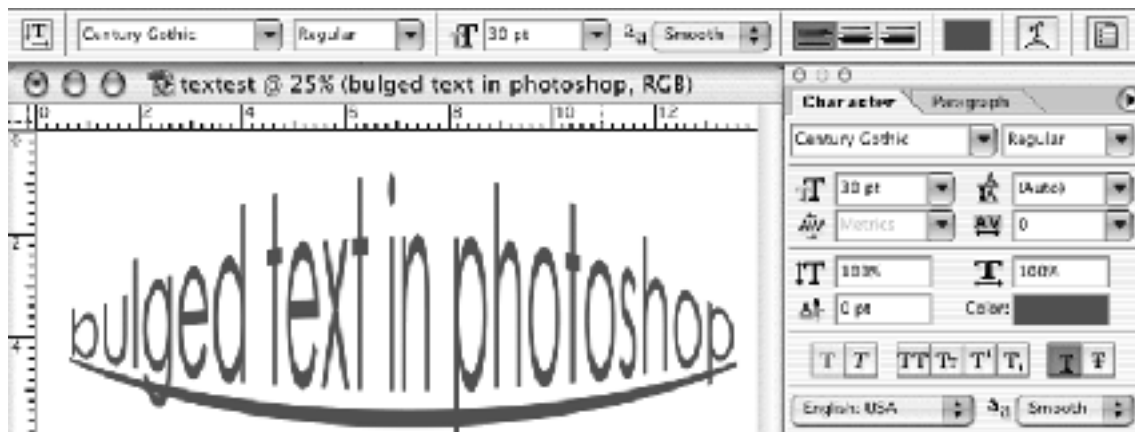


3. Select the text by dragging over it, and choose different fonts and sizes from the options area at the top of your document.



4. Change the degree of anti-aliasing to be applied to the edges of the text. Choose Sharp or Crisp for small type and Strong or Smooth for large. For very small type you may even prefer None.
5. Choose centre aligned
6. Choose a different colour from the text colour chip in the options area.
7. Move the text into the centre top of your page by moving your cursor slightly away from the text and, when the layer move tool appears, dragging.
8. Make sure the text is selected still and choose a text warping method from the next icon along.

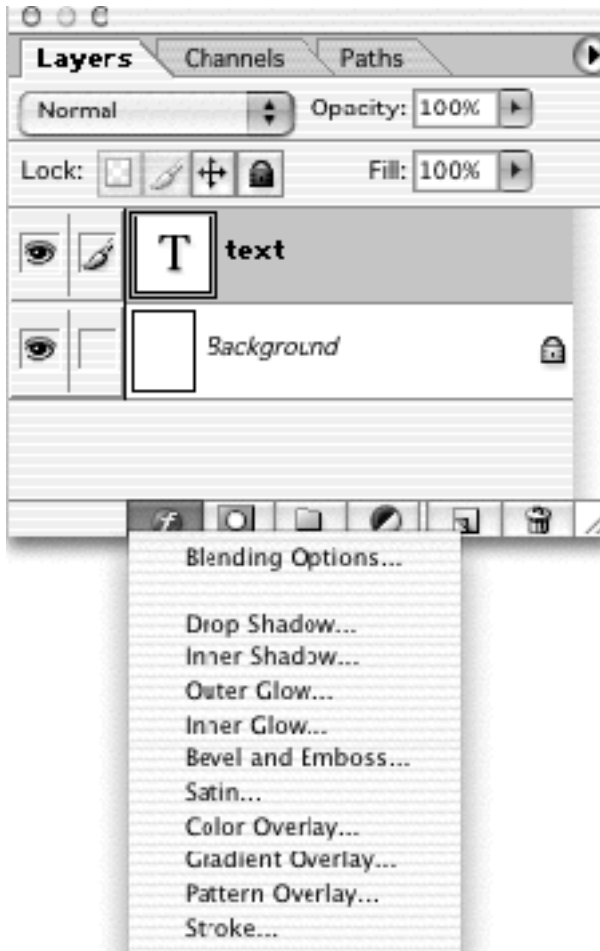




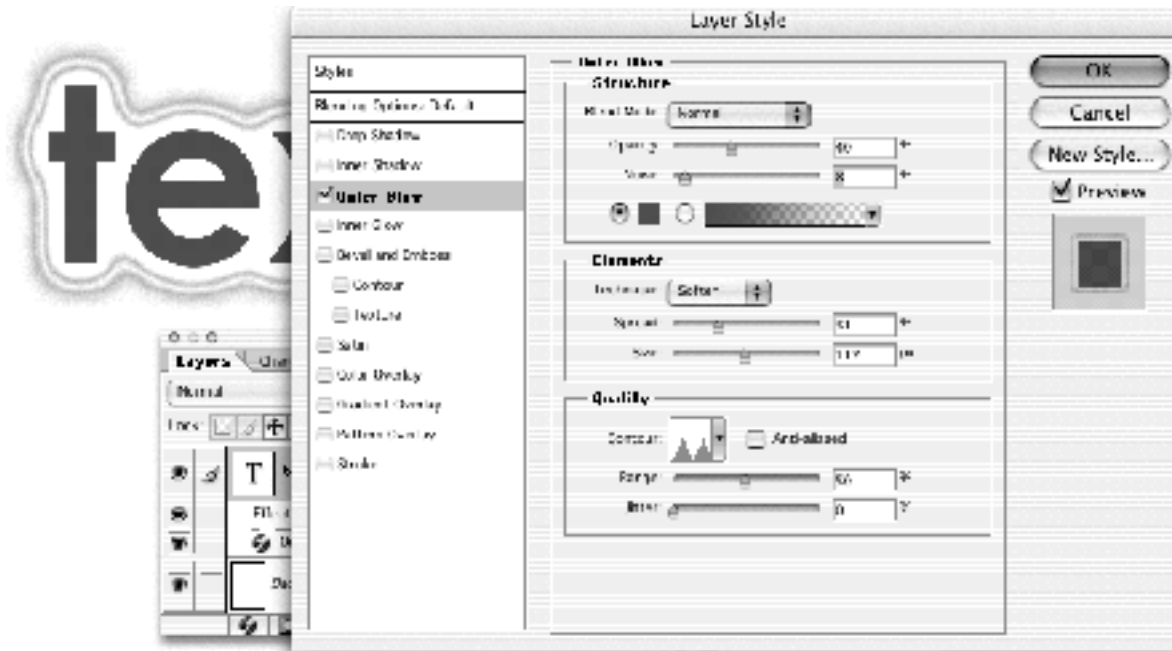
9. From the icon after the Text Warp, open the character format palette. this offers more controls than the basics in the options. Try changing the size, colour and horizontal or vertical scaling from this palette.

Layer Effects with Text

1. Make a new text layer by choosing the text tool, clicking on the document and typing another word. Move it well away from the first block of text.



2. In the layers palette, choose Outer Glow from the Effects icon.



3. Try different settings in the dialogue box to modify the effect. Try clicking on the icon for the Contour and modifying it.
4. Click OK.

Note that an Effects icon has been added to the Text Layer in the Layers Palette. You can double click that icon to go back to the dialogue box and edit its settings. Layer effects can be used with any layer, not just text layers.

Rasterising Text

During the editing process, the text is displayed using the fonts in your system. It is redrawn mathematically using the font outlines so that the shapes of the letters maintain their best possible quality. When you have finished modifying text, you need to rasterise it, that is, turn it into pixels like the rest of the photoshop imagery. After rasterising, the text can't be modified using the text tools. It has become just another part of the image.

1. From the Layer Menu choose Rasterise -> Type

Text Mask

The Type Mask tool creates a selection in the shape of the text rather than a new Text layer.

1. Open "Circuit4.jpg"
2. Hold down on the Text tool in the tool palette to see its flyout. Choose the Horizontal Type Mask Tool



3. Click on the page and type. Drag over the text to select it, change fonts, sizes etc just as before. Move it into place just as for ordinary text. Make the word or words large and fairly bold.
4. When you have finished modifying the text, press the Tick icon in the Options area (at the right hand end)

The text is turned into a selection.

5. from the Image Menu choose Adjustments -> Hue / Saturation and change the hue.
6. Deselect.

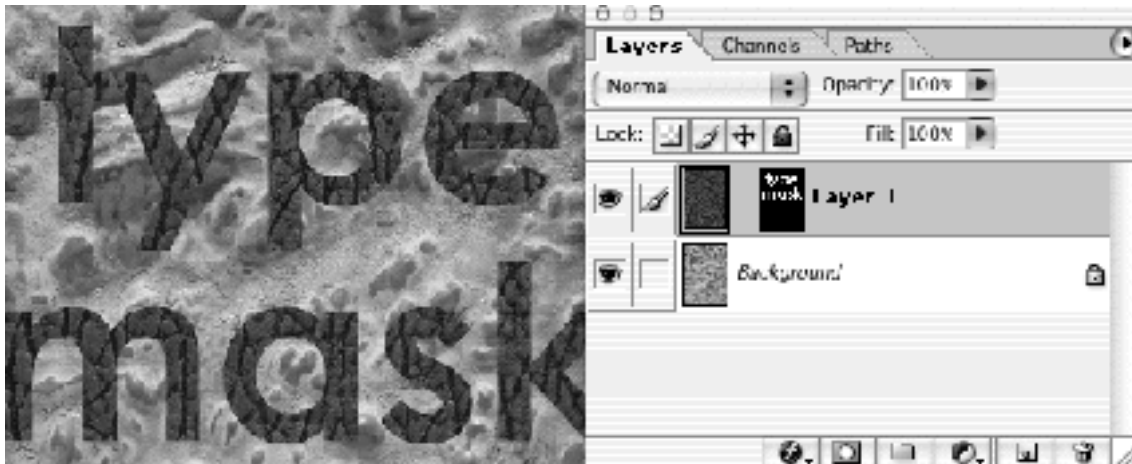
Unlike normal text, if you needed to edit this text now, you would have to use the history palette to go back to the beginning and start again.

Text Mask with a Layer Mask

1. Open "shark.jpg" and also open "IMG0053.jpg"
2. On "IMG0053.jpg" type using the text mask tool.

Note that the text is small even if you choose 72 points. Text is measured in relation to the cm measurements of your image rather than the pixels.

3. Undo whatever text you have typed by choosing the Layer Move tool and deselecting
4. From the Image Menu choose Image Size
5. Make sure resample Image is not ticked (we don't want to alter its size in megabytes, only its print area) and change the width to 14 cm. This automatically adjusts the height and resolution.
6. Type the words again and make any changes you want to font, size etc
7. Click the Tick icon to make the selection.
8. Bring the "shark.jpg" document to the fore.
9. Choose select all from the select menu and Copy (from Edit)
10. Bring the IMG0053.jpg" document to the fore
11. from the Edit Menu choose Paste Into.



This puts the pasted imagery inside the selected area. If you choose the Layer Move tool, you can drag the pasted shark image around while the text shapes stay still.

In the Layers palette you will see icons for the shark image layer with a **layer mask icon**. The Layer Mask has the shape of the text in it in black and white - whatever is white allows image to show through, whatever is black stops it from showing. Grey would allow a semi-transparency.

12. Click on the Layer Mask icon in the Layers palette to select it
13. Choose the Layer move tool and drag the image - the text shapes move, not the shark image.
15. When you have finished moving the two elements, image and mask, from the

Layer Menu choose Remove Layer Mask -> Apply

This discards any invisible imagery along with the mask itself.